

## RevFace15

Visible Light Facial Recognition Terminal  
with Mask Detection



Proactive  
Facial Recognition



New Height of  
Anti-Spoofing



Speedy  
Recognition



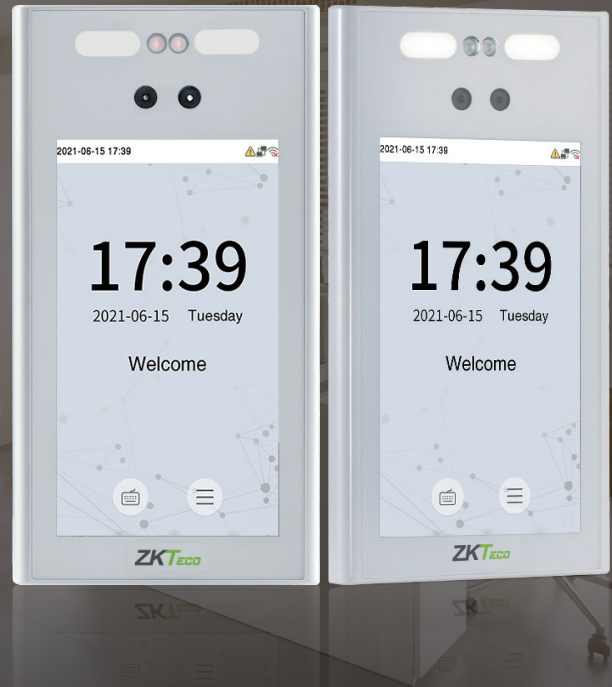
Wide Pose Angle  
Acceptance



Masked Face



Compatible with  
**ZKBio Access IVS**



**RevFace15** is a Visible Light Facial Recognition terminal with mask detection powered by the latest ZKTeco's customized CPU for running the intellectualized engineering facial recognition algorithm. It is designed to boost performance in all aspects and deal with all kinds of scenarios.

**RevFace15** comes with a robust design that works well between  $-20^{\circ}\text{C}$  ( $-4^{\circ}\text{F}$ ) and  $45^{\circ}\text{C}$  ( $113^{\circ}\text{F}$ ). It also meets the IP65 standard, enhancing environmental durability.

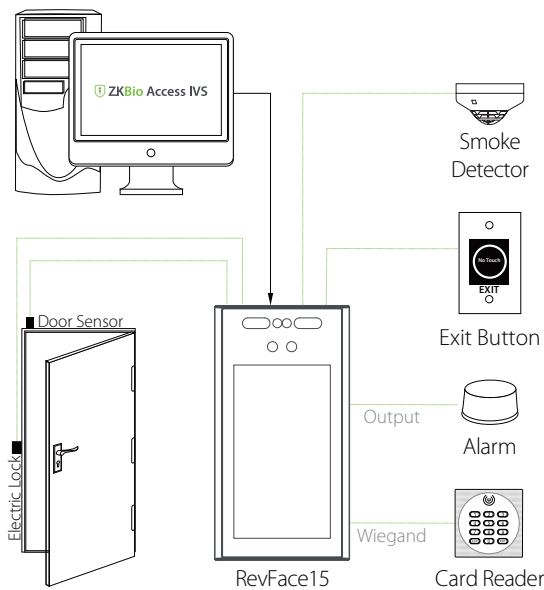
### Features

- 7-inch touch LCD screen
- Visible Light Facial Recognition
- Anti-spoofing algorithm against print attack (laser, color and B/W photos), videos attack and 3D mask attack
- IP65 ingress protection rating
- Compatible with external RS232, RS485 and Wiegand reader
- Unrivaled facial recognition speed (less than 0.2 seconds per face)
- Optional exclusive feature: Facial recognition of multiple people at once (up to 4 people)

# Specifications

Display	7-inch Touch Screen
User Capacity	10,000
Face Capacity	10,000
Transaction	200,000
Operation System	Linux
Standard Function	ADMS, T9 Input, DST, Camera, 9-digit User ID, Access Levels, Groups, Holidays, Anti-passback, Record Query, Tamper Switch Alarm, Multiple Verification Methods
Hardware	Quad-core ARM Cortex-A7@ 1.2GHz, 1GB RAM / 8GB Flash, 2MP WDR Low Light Camera, Adjustable LED Light Brightness
Communication	TCP/IP, Wiegand Input / Output, Wi-Fi, RS485 / RS232
Access Control Interface	3rd-Party Electric Lock, Door Sensor, Exit Button, Alarm output, Auxiliary Input
Facial Recognition Speed	≤0.2s
Biometrics Algorithm	ZKLiveFace V5.9
AC Adapter	DC 12V 3A
Working Humidity	0% to 90%
Working Temperature	-20°C to 45°C (-4°F to 113°F)
Dimensions (W*H*D)	119.9 * 226.6 * 27.7 (mm)
Protection Level	IP65
Supported Software	ZKBioAccess IVS

## Configuration



## Dimensions (mm)

