

IS56 Rev.04
08/06/2015



ROGER FOTOCELLULE

serie R90 e G90

EN - Instruction and warnings for the installer

1 Technical specifications

TECHNOLOGY	Direct optical interpolation between the photocell TX and the photocell RX with modulated infrared ray
SUPPLY VOLTAGE	12/24Vac 50Hz, 12/24Vdc
CURRENT CONSUMPTION	TX=19mA, RX=20mA
WAVELENGTH INFRA-RED EMISSION	880 nm
ANGLE OF DIODE EMISSION	<17°
OPERATIONAL DISTANCE	Standard 10 m, option 15m obtained by cutting the connection E positioned on the rear of the RX photocell circuit board. See fig. 3 Minimum operational distance of 0.8 m
OUTPUT CONTACT	Double relay with series connections (double safety), normally open output (COM-NO) and normally closed output (COM-NC), 30Vmax 0.5Amax with resistive load
RELAY INTERVENTION TIME	<30ms
OPERATING TEMPERATURE	-20°C ... +55°C
PROTECTION RATING	IP 55
PRODUCT SIZE	R90/F2ES dimensions in mm. 62 x 88 x 27 Weight: 90g G90/F2ES dimensions in mm. 75 x 77 x 29.2 Weight: 141g G90/F2ESI dimensions in mm. 75 x 77 x 56.6(RX) 54.9(TX) Weight: 167g G90/F2ES/TRIX/... dimensions in mm. 75 x 98 x 58 Weight: 283g

2 Introduction to instructions and warnings

This manual is intended only for qualified technical staff in charge with machine installation.

The information in this manual is not intended for the final user.

This manual refers to the synchronized photocells R90/ F2ES, G90/F2ES, G90/F2ESI, G90/F2ES/TRIX/TX and G90/F2ES/TRIX/RX and must not be used for any other product.



WARNINGS

Read thoroughly this section before installing the machine.

The installation must be performed only by qualified technical personnel in accordance with relevant legislation.

Perform connections with cables that are adequate to the current and voltage requirements and comply with product specifications.

In order not to affect their proper functioning, the photocells must operate without using reflections and must not interfere with other photocells, whether they be of the same or of different types. It is possible that interferences occur between the pair of not-synchronized photocells with tension 12/24V ac-dc, among more than two pairs of synchronized photocells with tension 12/24Vac or with other devices that emit infra-red light. Take all the necessary precautions in order to eliminate this problem.

To better understand the issues related to reflection and interference see **figure 4**.

3 Product description

The synchronized photocells versions **R90/F2ES, G90/F2ES, G90/F2ESI, G90/F2ES/TRIX/TX** and **G90/F2ES/TRIX/RX** are presence detectors based on infra-red technology, which allow detecting obstacles on the optical axis between the transmitter and receiver photocells; they can be used for automatic entries, for courtesy services and monitoring passageways.

Within these instructions, the transmitter photocell is referred to as TX photocell, the receiver photocell is referred to as the RX photocell, while one or more pairs of photocells (always consisting of an RX and a TX photocell) will be referred to as photocells.

These photocells are intended for installation on fixing surfaces flat and parallel to each other, which enable the proper centring between the TX and the RX photocells.

Versions available:

- **R90/F2ES** and **G90/F2ES** for external fixing installation
- **G90/F2ESI** for installation inside 60mm diameter round boxes
- **G90/F2ES/TRIX/TX** and **G90/F2ES/TRIX/RX** only installation with TRIX series columns.

4 Terminals and signalling

Terminals for photocell TX (see **figure 1**):

- 1 positive supply 24Vdc, supply 24Vac
- 2 negative supply 24Vdc, supply 24Vac

LED for TX signalling photocell (see **figure 1**):

PW turned on when supply voltage is present, if off, indicates that the power supply is missing or is incorrectly connected

Terminals for photocell RX (see **figure 1**):

- 1 positive supply 24Vdc, supply 24Vac
- 2 negative supply 24Vdc, supply 24Vac

3,4,5 OUTPUT. Normally closed contact (terminals **3-4**) with working photocells and no obstacles between TX and RX. Normally open contact (terminals **4-5**) with working photocells and no obstacles between TX and RX.

LED for RX signalling photocell (see **figure 1**):

L indicates the condition of the output contact, its brightness is proportional to the received signal strength, it turns off when there is an obstacle between the photocells (contact open)

Selecting the supply voltage of the photocells 12/24V ac/dc

The photocells are always delivered prearranged for 24V ac/dc power supply.

To power the photocells 12V ac/dc is necessary to short-circuit by means of tin whiskers the pads **C** (see **Figure 3**) at the rear of the printed circuit boards of the photocells.

5 Installation

Caution: before installing the photocells, check the compatibility and technical specifications of the control

devices to which they will be connected.

5.1 Mounting

Open the photocells, pull-out the electronic circuit cards (see **figure 5, 6, 7, 8**).

Choose the location of the photocells.

Attach the bottom of the shell.

For the **G90/F2ES/TRIX/TX** and **G90/F2ES/TRIX/RX**: versions, fix the head (detail **I, Figure 8**) to the column TRIX with the screws provided. Place the card slot (detail **M, Figure 8**) on the head.

WARNING: the TX and RX lower shells are different from each other, check the embossed writing on the back prior to fixing.

5.2 Wiring

WARNING: connect wires with the power turned off.

Arrange the cables: there are needed 2 wires to connect a TX and a maximum of 4 wires to connect a RX.

If needed, connect the output terminals.

Connect the power supply, ensure the correct polarity.

Continuous current photocells power supply 12/24Vdc

Connect the 12/24Vdc power supply to the terminals of the photocells according to the polarity of the supply, as indicated in **figure 1**. **Warning:** the synchronization in continuous current cannot be activated, while the presence or absence of jumpers **P1** in TX photocells is irrelevant.

Alternate current photocells power supply 12/24Vac 50Hz

Connect the power supply 12/24Vac 50Hz to the terminals of the photocells with no obligation of connecting the phases, as indicated in the **figures 1 and 2**, check the connection of the jumper **P1** for TX photocells, its absence enables the synchronization and requires the phased connection, as indicated in **figure 1 and 2**.

Synchronization of one photocells pair

The synchronization allows installing two pairs of photocells very close to each other with no interferences problems.

To enable the synchronization remove the **P1** jumpers inserted in the two TX photocells, connect the 12/24Vac 50Hz power supply to terminals 1-2 of the photocells, with the obligation of connecting the phases as indicated in the **figures 1 and 2**. If the phase connection has not been properly carried out, the photocells will not function.

Checking the proper alignment between photocells

The RX photocell has one red led (indicated with **L** in **figures 1 and 2**). its brightness is proportional to the received signal strength and it also indicates the correct alignment between photocells. The higher is the brightness, the greater is the power received and the better the alignment performed. Despite the fact that the RX photocell works even with poor signal received, it is recommended to run the best possible alignment so to ensure an efficient operation even in case of fog, dust or rain.

5.3 Container Closure

To close the photocell containers proceed as follows:

R90/F2ES

- Check that the seal (detail **A, figure 5**) is properly inserted in the upper shell.
- Position the top shell and secure it using the two supplied screws.

G90/F2ES

- Place the gasket (O-ring, detail **C, figure 6**) in the groove of the upper shell.
- Position the gasket (detail **D, figure 6**) and the upper shell and secure with the two supplied screws.

- Gently press the mask (detail **E, figure 6**) until it clicks.

G90/F2ESI

- Place the gasket (O-ring, detail **F, figure 7**) in the groove of the upper shell.
- Position the gasket (detail **G, figure 7**) and the upper shell and secure with the two supplied screws.
- Gently press the mask (detail **H, figure 7**) until it clicks.

G90/F2ES/TRIX/TX and G90/F2ES/TRIX/RX

- Place the gasket (O-ring, detail **N, figure 8**) in the groove of the upper shell.
- Position the gasket (detail **O, figure 8**) and the upper shell and secure with the two supplied screws.
- Gently press the mask (detail **P, figure 8**) until it clicks.

6 Testing

Testing of one photocells pair

Testing allows verifying the correct operation of the photocells and of possible interference caused by other nearby devices with infra-red emission.

Enable the control device to which the photocells are connected.

With a cylindrical object having about 50mm diameter, cut the infra-red light beam several times between the photocells. Repeat the same operation by positioning yourself near the TX photocell, then near the RX photocell and then between them. If the control device detects correctly each interruption at all points, the test is successfully completed.

When installing two or more pairs of photocells, repeat the same procedure, taking care to check for any interference between them.

7 Maintenance

Perform scheduled maintenance every 6 months and verify the cleanliness and working of all photocells.

In the presence of dirt, moisture, insects or anything else, clean the photocell and run again the test procedure.

If oxidation is detected on the printed circuit, evaluate its replacement.

8 Disposal

The product must always be uninstalled by qualified personnel using the appropriate procedures for the proper removal of the product.

This product is made of various types of materials, some could be recycled, others must be disposed off in compliance with local recycling and disposal regulations as they pertain to this category of product.

The disposal of this product as household waste is forbidden. Carry out "separate collection" for disposal in accordance with the methods established by local regulations; or return the product to the retailer when buying an equivalent new product.

Local regulations may provide for heavy penalties for illegal disposal of this product.

Warning: some parts of the product may contain pollutant or hazardous substances, which if dispersed could cause harmful effects to the environment and to human health.



9 Declaration of Conformity

The undersigned, representing the following manufacturer

Roger Technology

Via Botticelli 8, 31021 Bonisiolo di Mogliano V.to (TV)

DECLARES that the equipment described below:

Description: Photocell for automatic opening

Model: R90 and G90

Complies to the legal requirements of the following directives: 2004/108/EC; 2006/95/EC; 2011/65/EC.

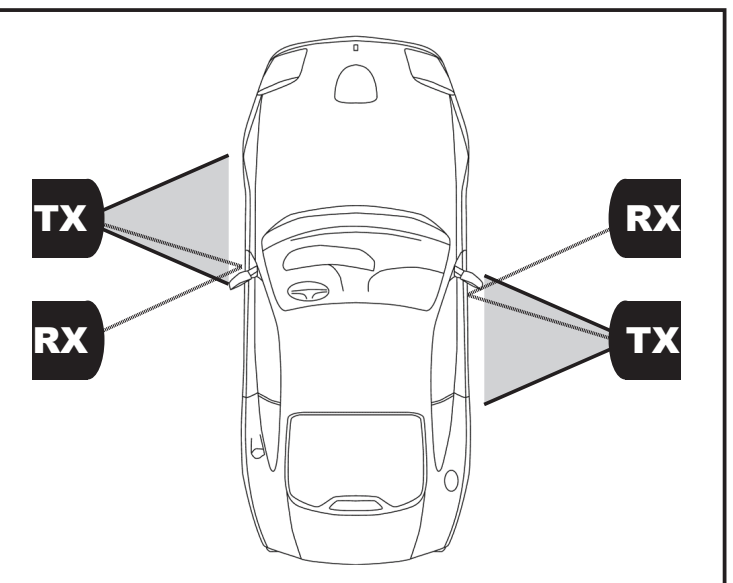
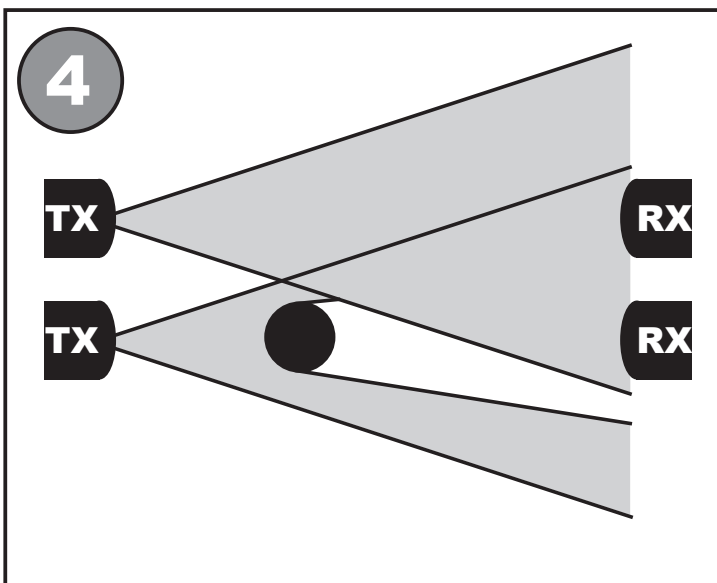
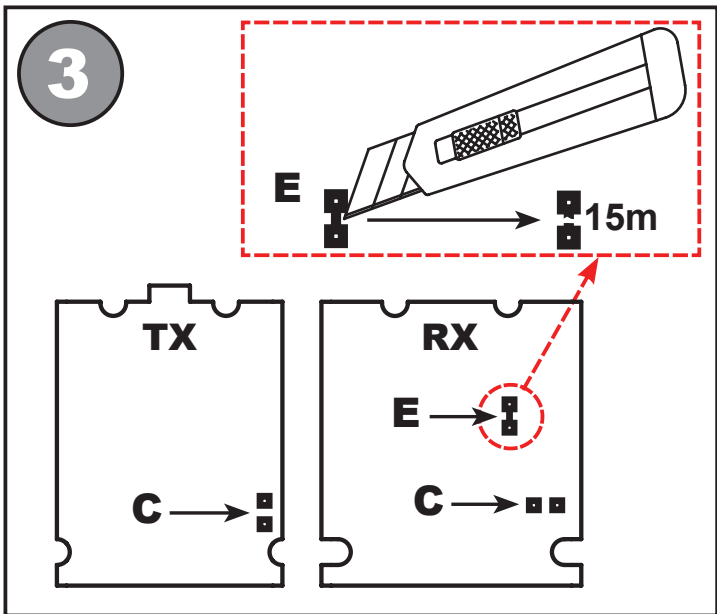
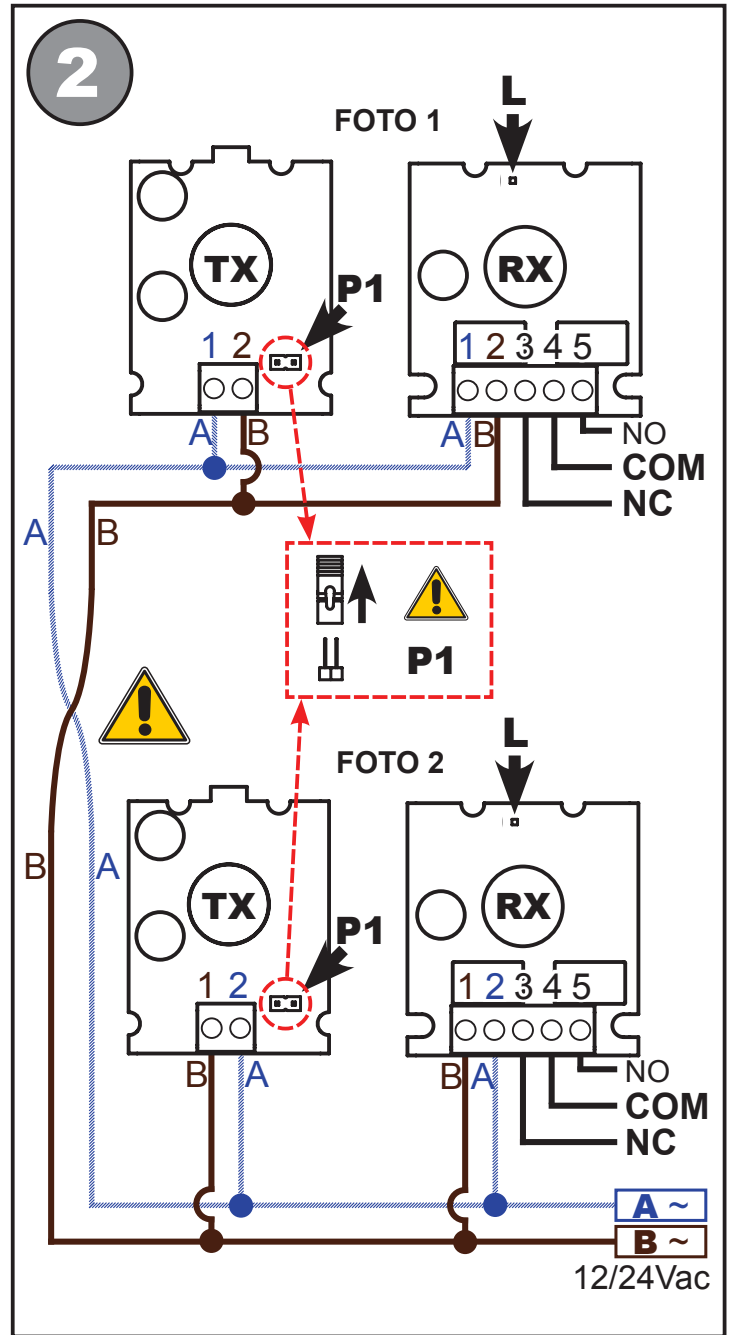
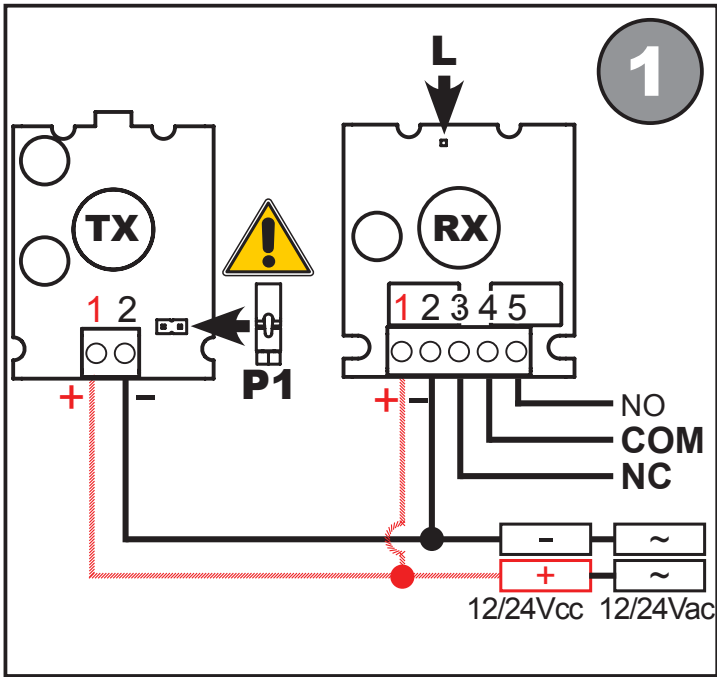
And that all the standards and/or technical specifications listed below have been applied: EN 61000-6-3; EN 61000-6-2.

The last two digits of the year in which the marking was affixed **CE 12**.

Location: Mogliano V.to

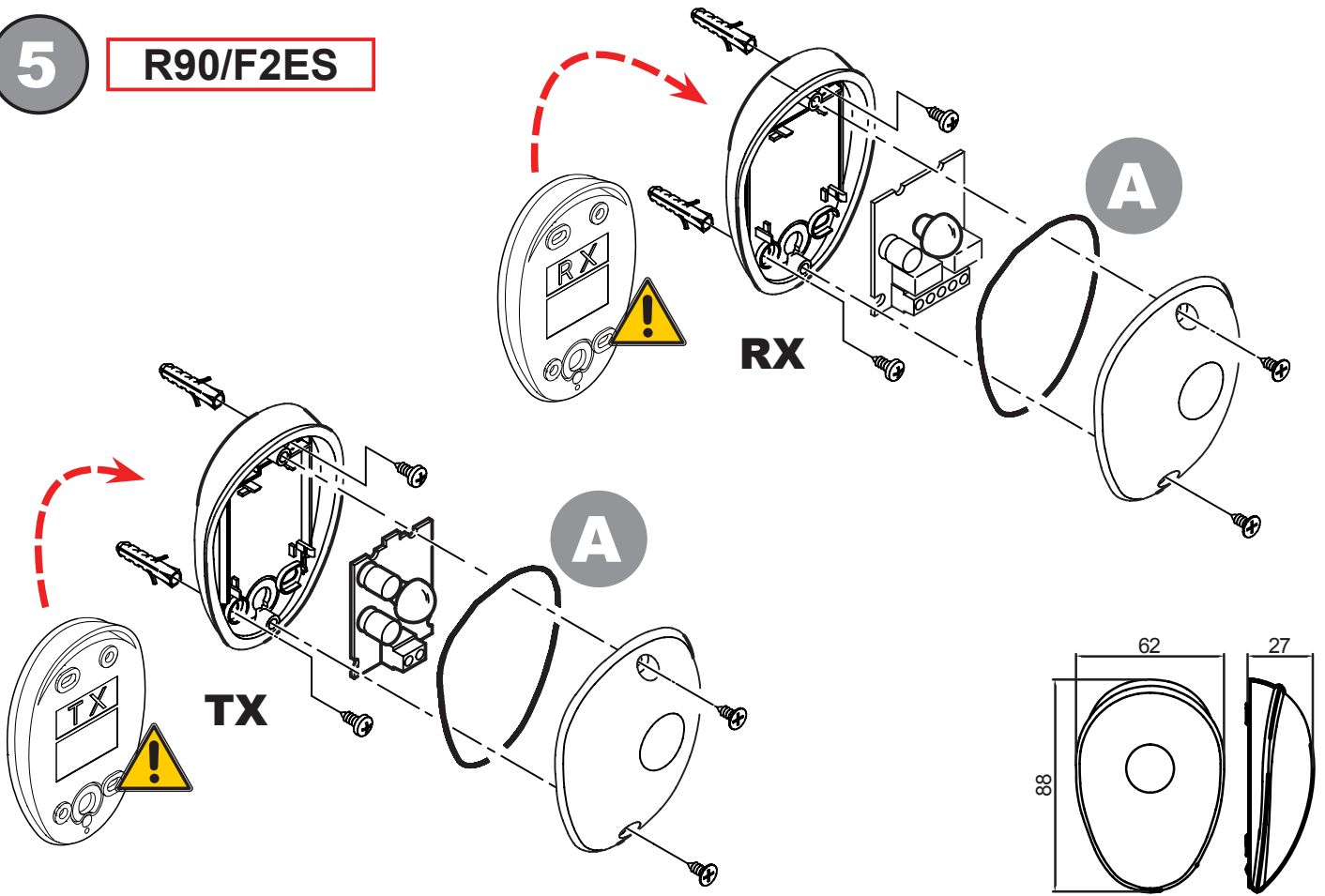
Date: 01-10-2012

Signature



5

R90/F2ES



6

G90/F2ES

