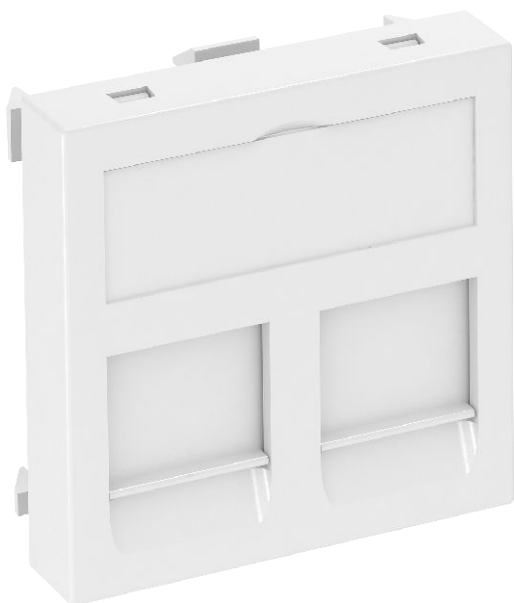


Technical data sheet

Data technology support, 1 module, straight outlet,
type A
Item no. 6119202



Data technology support with straight outlet and locking slider to accept two data technology connection modules with RJ45 socket. The locking fastening is suitable for horizontal and vertical installation in the system environment. Type A has a mounting opening of 20.10 x 14.80 mm and is designed for direct fastening of the data connection modules in the mounting opening.

PC Polycarbonate

Additional product text 1

The Type A data technology support is suitable for accepting the following data connection modules: AMP TYCO (without dust protection cap): SL Series 110Connect and SL Series Toolless; Brand-Rex: modules with item numbers ending in ...JAKS000CR and ...JAKU002; Nexans: LANmark RJ45 with blue adapter clip, LANmark GG45 with metal clip.

Additional product text 2

For installation in Rapid 45 and Rapid 80 device installation trunking, ISS service poles and underfloor systems.

Master data

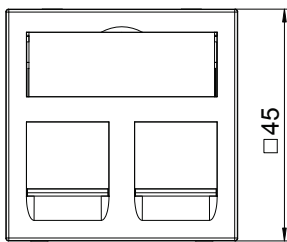
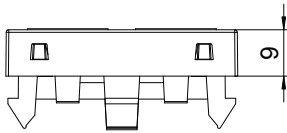
Item no.	6119202
Type	DTG-2A RW1
Description 1	Data technology support
Description 2	f. 2 connection modules type A
Dimension	45x45mm
Colour	Pure white
RAL number	9010
Material	Polycarbonate
Material symbol	PC
Smallest sales unit (VG)	1,00 Piece
Weight	1,10 kg/100 pc.

Technical data sheet

Data technology support, 1 module, straight outlet,
type A
Item no. 6119202



Technical data



Width	45,00 mm
Height	45,00 mm
Depth	9,00 mm
Dimension	45 x 45 mm
Surface version	Matt
Number of units	1,00
Fastening type	Lock
Labelling panel	With labelling panel
Halogen-free	<input checked="" type="checkbox"/>
Hinged cover	<input type="checkbox"/>
Lamp-wire connector	<input type="checkbox"/>
With printed label	<input type="checkbox"/>
Mit Staubschutz	<input checked="" type="checkbox"/>
Mounting opening	Type A
Protection rating	IP20
Support ring	<input type="checkbox"/>
Transparent	<input type="checkbox"/>
Use	Installable data connector
Strain relief option	<input type="checkbox"/>
Combination	Basic element with central cover plate