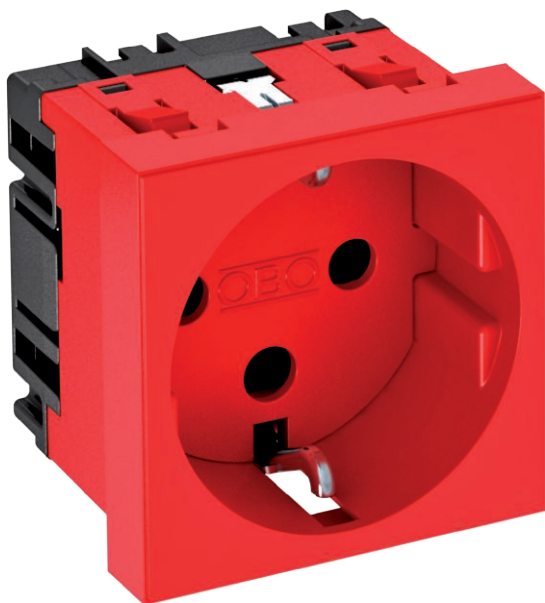


Technical data sheet

0° socket, protective contact, encoded version, single

Item no. 6120292



Protective contact socket Single 0°, encoded version, with increased touch protection, with screwless terminals, 2-pin, 16 A, 250 V~, with connection terminals according to IEC 60884-1. The socket can only be used in connection with an encoding pin of type CST-STD.



PC Polycarbonate

Additional product text 1
Additional product text 2

Note: The encoding pin is not contained in the scope of supply.
For installation in Rapid 45 trunking, device installation trunking, service poles, underfloor systems and desk boxes.

Master data

Item no.	6120292
Type	STD-D0K SR01
Description 1	Socket 0°, single, coded
Description 2	protective contact
Dimension	250V, 10/16A
Colour	Signal red
RAL number	3001
Material	Polycarbonate
Material symbol	PC
Smallest sales unit (VG)	1,00 Piece
Weight	4,20 kg/100 pc.

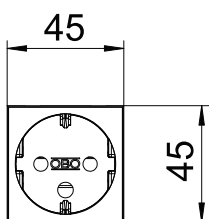
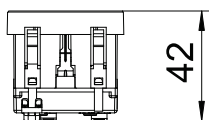
Technical data sheet

0° socket, protective contact, encoded version, single

Item no. 6120292



Technical data



Width	45,00 mm
Height	45,00 mm
Depth	42,00 mm
Cover	Central plate
Closable	<input type="checkbox"/>
Connection type	Screwless terminal
Printed label/coding	Without printing
Version	Single 0°
Version	Socket 0°, single, coded, protective contact
Surface version	Matt
Sockets/switch version	SCHUKO
Version for	SCHUKO
Number of poles	2,00
Number of units	1,00
Number of modules (for modular construction)	0,00
Number of switchable sockets	0,00
Ejection mechanism	<input type="checkbox"/>
Fastening type	Lock
Labelling panel	<input type="checkbox"/>
Operating temperature	-5,00 - 40,00 °C
Error current protection	<input type="checkbox"/>
For more difficult conditions (according to VDE)	<input type="checkbox"/>
Power reserve	<input type="checkbox"/>
Halogen-free	<input checked="" type="checkbox"/>
Insulated installation	<input type="checkbox"/>
Increased touch protection	<input checked="" type="checkbox"/>
Hinged cover	<input type="checkbox"/>
Coding	Yes
Warning light	<input type="checkbox"/>
With on/off switch	<input type="checkbox"/>
With fine-wire fuse	<input type="checkbox"/>
With functional lighting	<input type="checkbox"/>
With orientation lighting	<input type="checkbox"/>
Mounting type	Device installation duct
Nominal voltage	250,00 V
Nominal current	16,00 A
Protection rating	Other
Special power supply	Without special power supply
Socket version	Schutzkontakt
Socket angle	0°
Transparent	<input type="checkbox"/>
Surge protection	<input type="checkbox"/>
Rotated central insert	<input type="checkbox"/>